



1. Puparia on seedling spring wheat



2. Adult on wheat



5. Puparia on jointed wheat



6. Spring wheat seedling stunted by Hessian fly

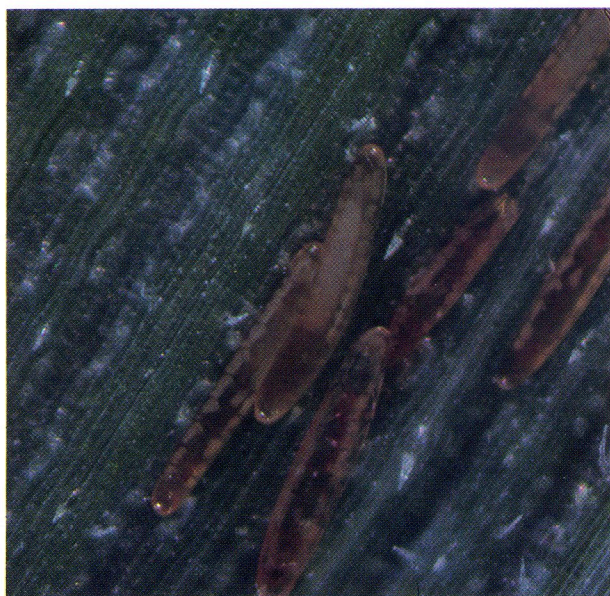


9. Closeup of dwarf tiller in No. 8 with puparia at base of tiller



10. Stunted wheat

Various stages in the life cycle of the Hessian fly and wheat damaged by the fly. All photographs taken in Benton County, Washington in 1980 or 81, except No. 10, taken in San Juan County, Washington in 1978. Nos. 1-11 by K. S. Pike, No. 12 by M. Glazer.



3. Eggs on wheat



4. Larvae on spring wheat



7. Stunted spring wheat seedlings (arrows point to specific stunted seedlings or tillers)



8. Four-tillered spring wheat seedling with one tiller (arrow) dwarfed



11. Stunted wheat heads (left) and normal heads



12. Thin wheat stand caused by fly



HESSIAN FLY
in
Washington
XB0909 1981

Washington State University
College of Agriculture Research Center