

Low-Impact Development Case Study

RAILROAD PARK

Creating an Urban Green



Lea Ann Macknally, ASLA
Macknally Land Design

Pre-Design Objectives

- Recreate habitat
- Collect & filter stormwater runoff
- Revegetate disturbed areas
- Connect the community
- Utilize readily available local materials
- Provide an educational opportunity for visitors
- Promote sustainable initiatives



railroad park



sus·tain·able

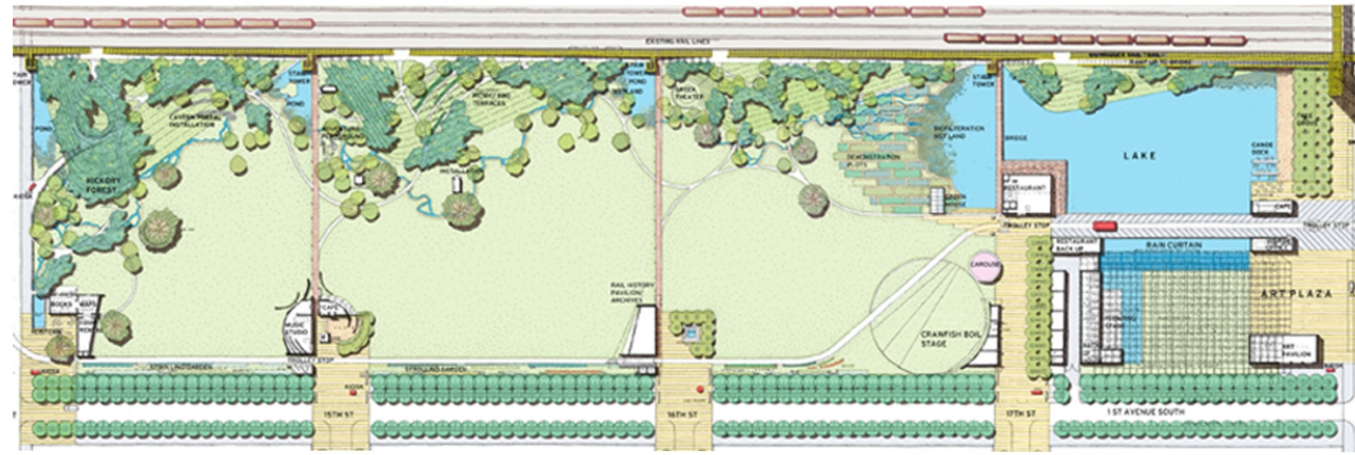
ˌsə-ˈstā-nə-bəl

- :able to be used without being completely used up or destroyed
- : involving methods that do not completely use up or destroy natural resources
- : able to last or continue for a long time

Merriam-Webster.com. Merriam-Webster

Planning...

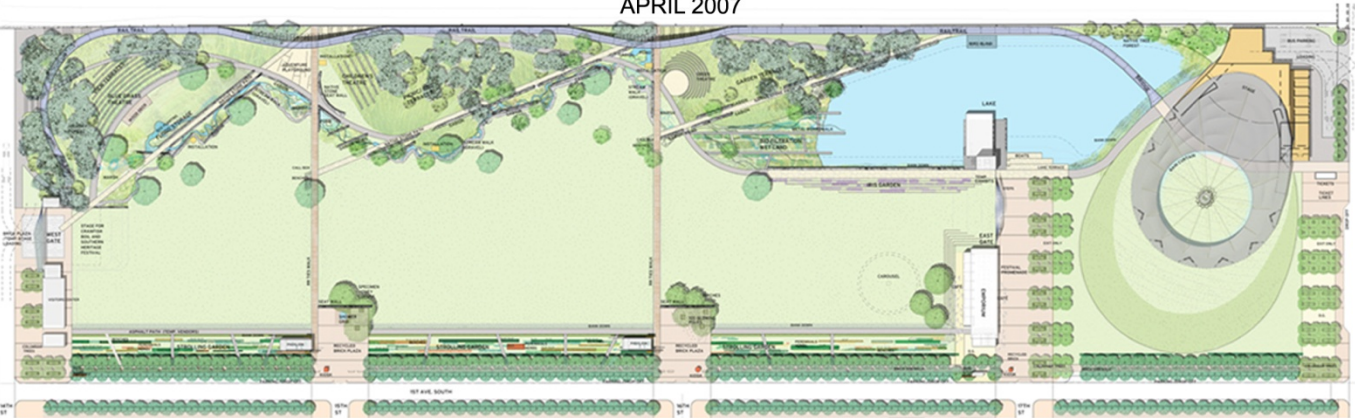
SEPTEMBER 2005



JANUARY 2007

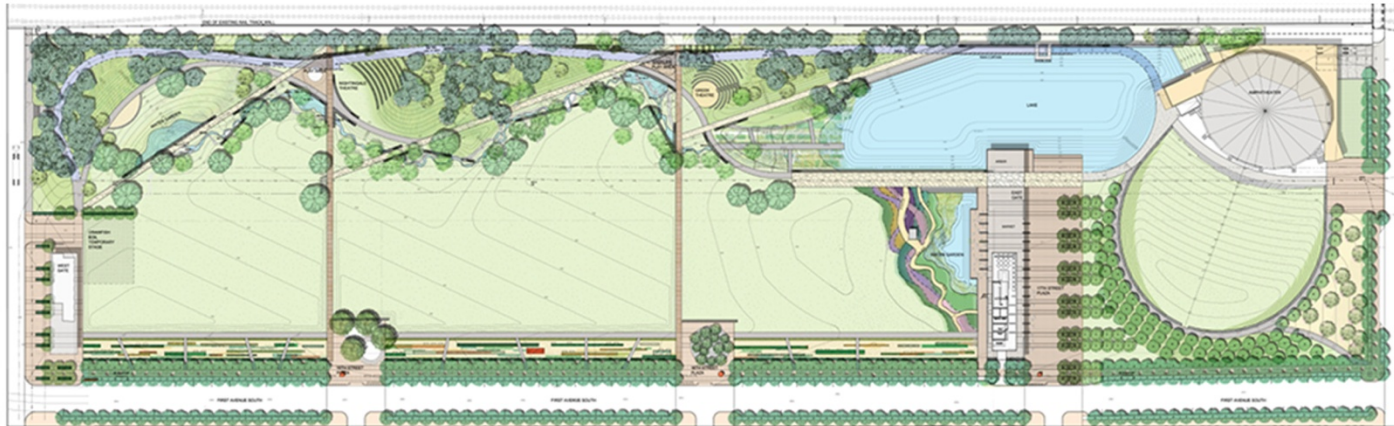


APRIL 2007

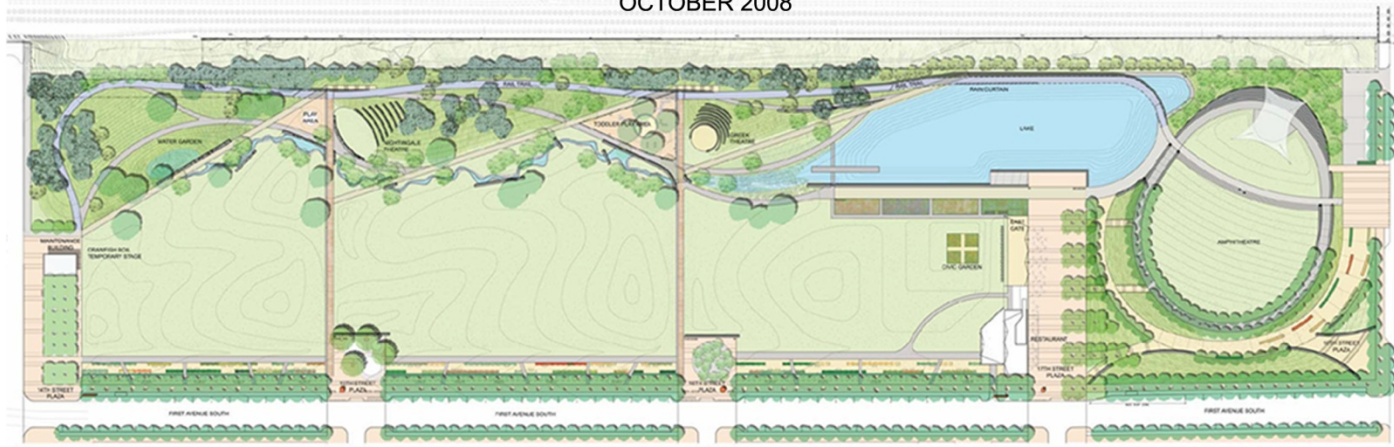


...more
planning

APRIL 2008



OCTOBER 2008



JANUARY 2009



the plan!



RAILROAD PARK Birmingham, Alabama

November 5, 2009

SCALE 1"=100'0"

Van Lierke Studio
Mechanical Plans and Design
Landscape Architecture
1015 17th Street
Birmingham, AL 35203

stormwater collection system

lake, stream & wetlands



plant palette

native grasses



plant palette

wildflowers



material selection

reclaimed and local materials
pervious paving



before and after:
railroad park



BEFORE



AFTER

before and after:
railroad park



BEFORE



AFTER

before and after:
railroad park



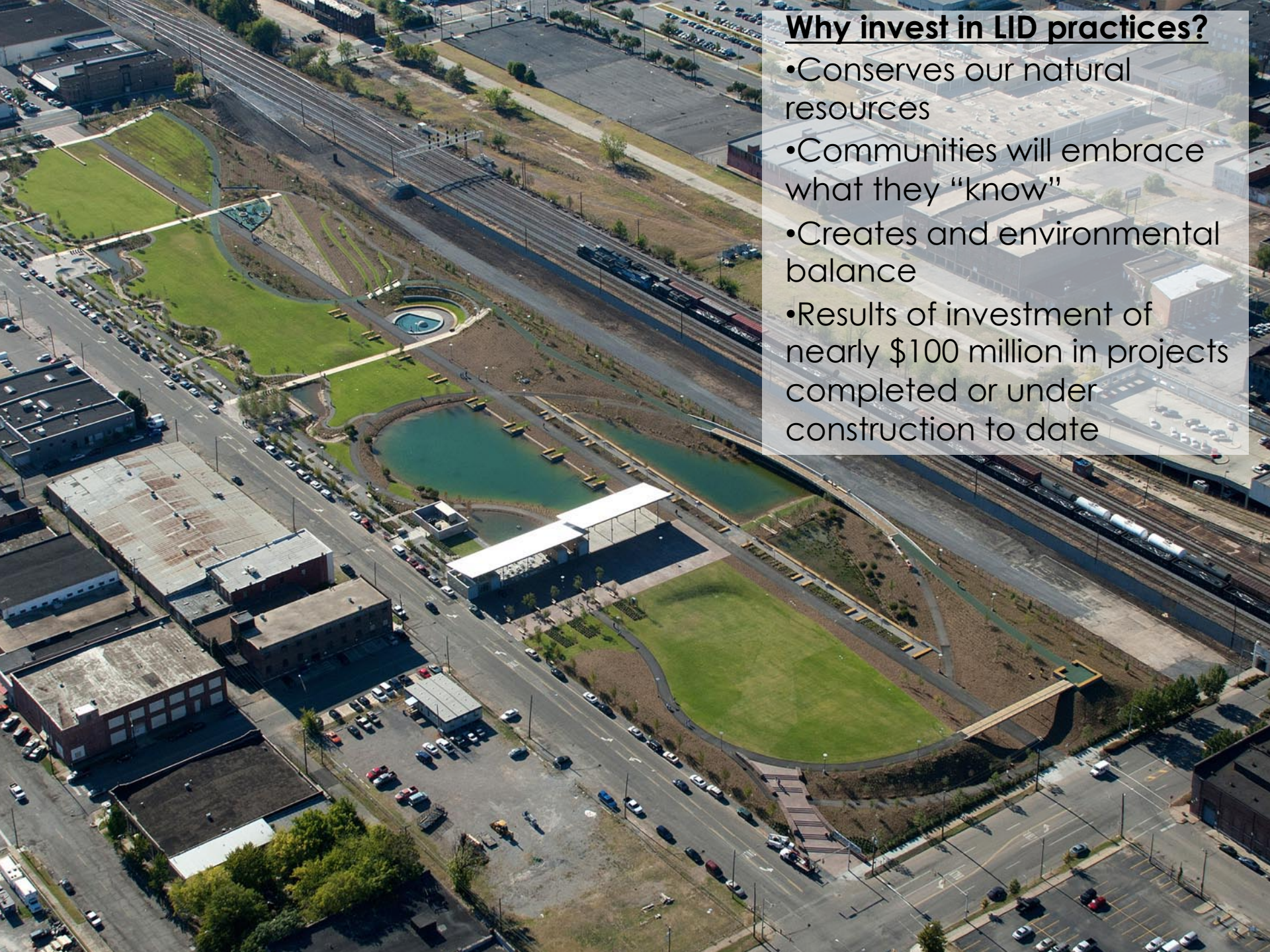
BEFORE



AFTER

wildlife





Why invest in LID practices?

- Conserves our natural resources
- Communities will embrace what they “know”
- Creates and environmental balance
- Results of investment of nearly \$100 million in projects completed or under construction to date