

North Alabama Pecans





Cotton is crop most associated with the Tennessee Valley

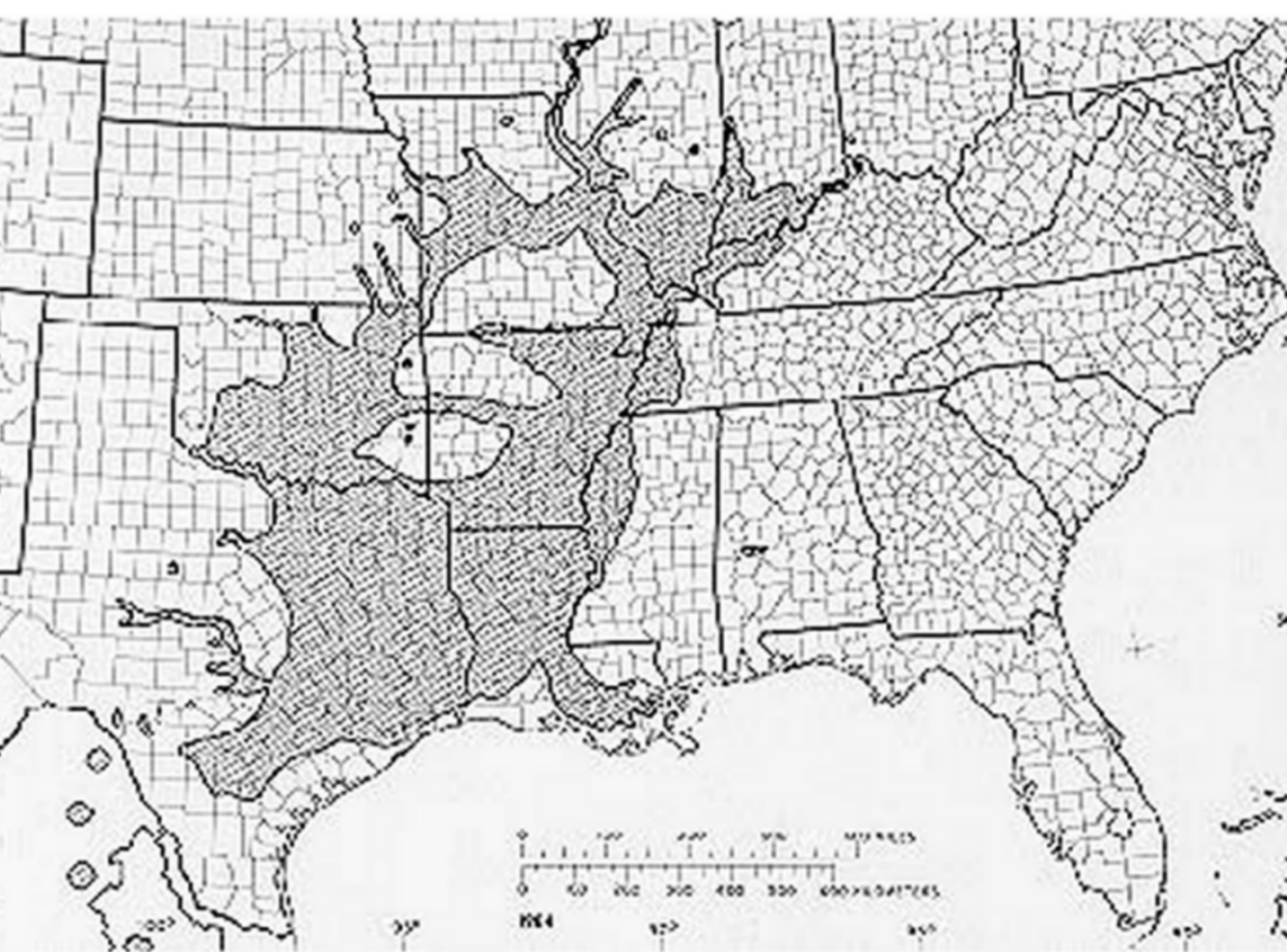




FIG. 22. Two pecan trees, supposed to be remnants of the original forest, in dark brown clay soil in the black belt, about half way between Marion and Uniontown, Perry County. September 25, 1924. The largest one had a trunk 38 inches in diameter. The other one had been struck by lightning not long before.



FIG. 23. Supposed native pecan trees in Walker's Bottom, about two and one-half miles west of Uniontown, in Marengo County, with a fallen trunk of same species about four feet in diameter in the foreground. September 25, 1924.



Alabama Native Pecan
February 2007
Marengo County Alabama





Pecan Demonstrations

Plantings are located at the Tennessee Valley Research and Extension
Center at Belle Mina



Sand Mountain

And, the Sand Mountain Research and Extension Center at Crossville



Sunday morning, April 8, 2007

Temperatures were in the low 20's after several weeks of unseasonably warm weather. All pecan cultivars were a few days away from bloom.



**All Cultivars affected without exception including
“Northern” cultivars**

88% of all CREEK trees were totally killed.

Average Frost Free Period

April 15 to October 15

Or about 180 days



OCONEE

August 18, 2008



PAWNEE

August 18, 2008



PAWNEE

Early Maturity Date
Scab susceptible
44 nuts/lb 58% kernel



MAJOR

August 18, 2008



MAJOR

Early Maturity Date

Scab Resistant

78 nuts/lb 49% kernel



KANZA

Early maturity date

Scab resistance

77 nuts/lb 54% kernel



LAKOTA

Early Maturity Date

Scab Resistant

59 nuts/lb 62% kernel



OSAGE

Very Early Maturity (mid September)

81 nuts/lb 55% kernel

Resistant to Scab



APALACHEE

Average nut size 5.4 grams
high yield (1598 lbs/Acre average)
55% kernel



MANDAN

Average nut weight 8.6 grams

Average yield 982 lbs/Acre

61.8%kernel

New Selections

Currently in trials at Auburn

Jumbo Joy

Remlap, AL



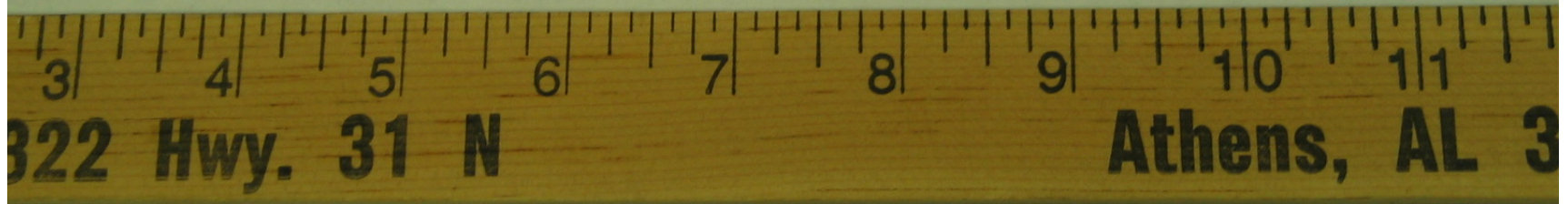
Jumbo Joy



Gafford

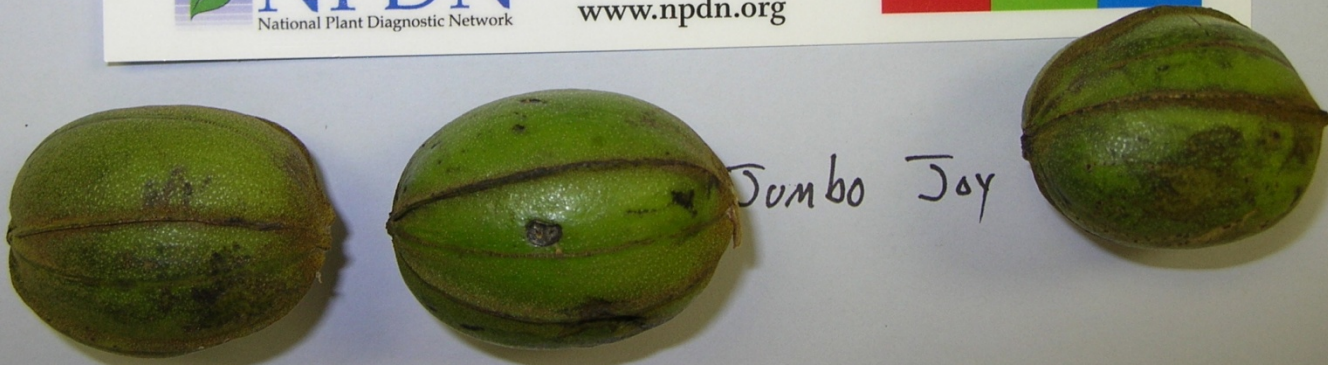
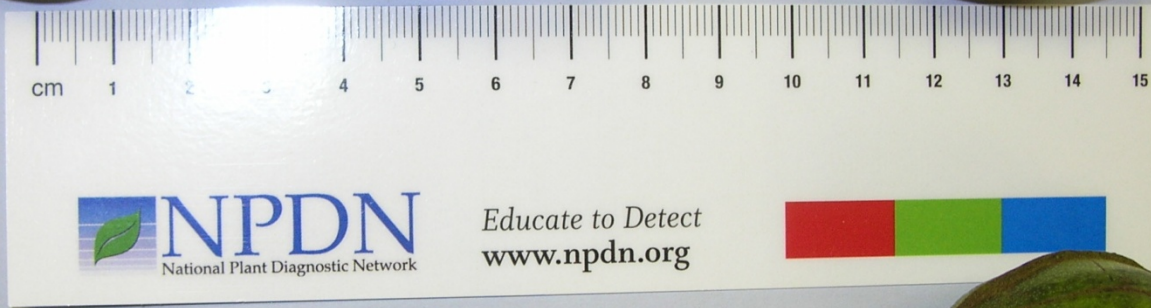


Cape Fear





Warden



Jumbo Joy

Tobacco Barn

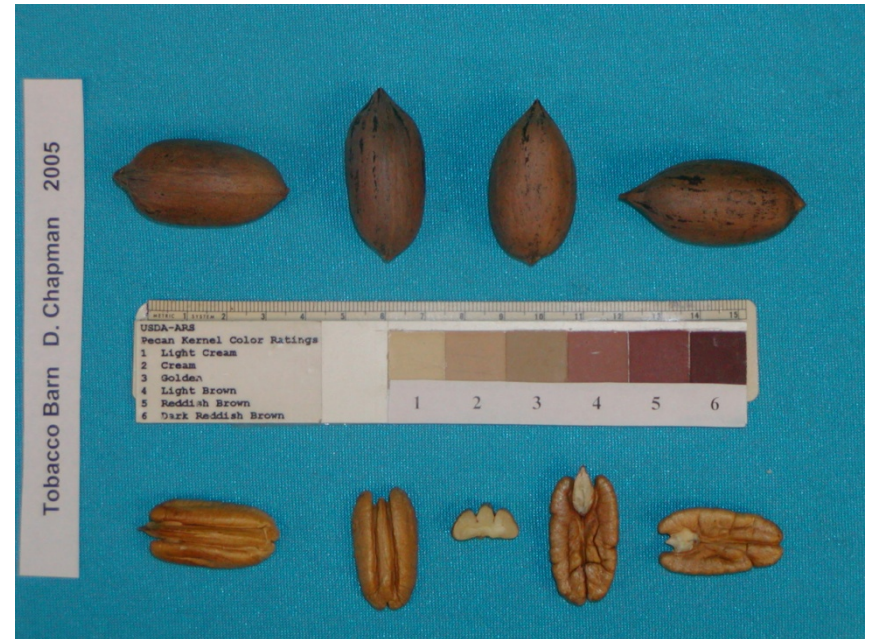
Waycross, GA

58 nuts/lb 56% kernel

Tree



Nut



TOBACCO BARN



SCHLEY

